

Evaluation Criteria

Overview of decisions

1. Confirmation of the case for change

2. Is the model of care supported?

3. Are there any alternative options?

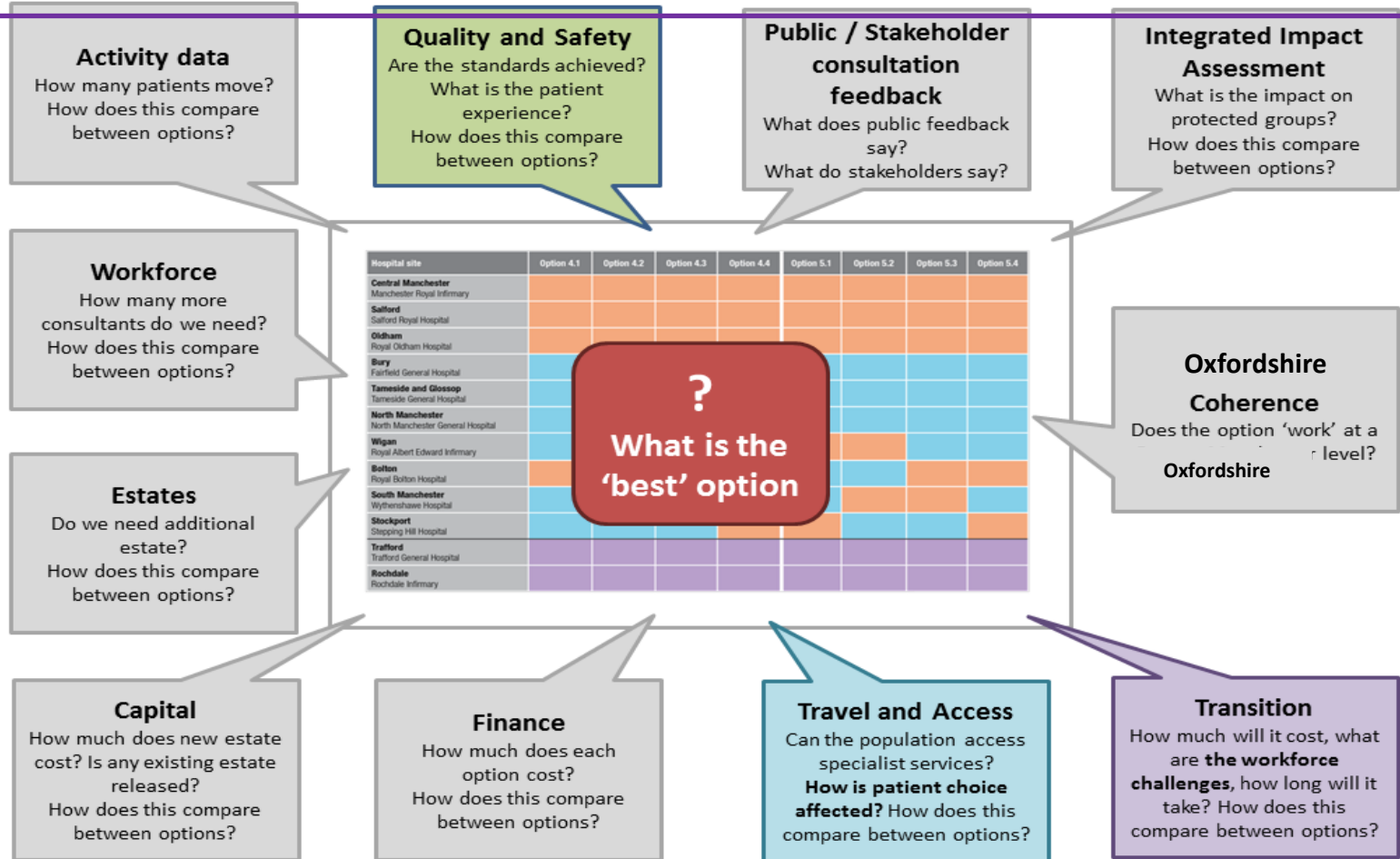
4. What criteria will be used?

5. How many single services should there be, 4 or 5?

6. Which option should be implemented

3. Consultation – appraisal criteria?

What criteria should we use to Evaluate the Options & Proposals



Evaluation Criteria

What information will be used to select a preferred option?

Example taken from Greater Manchester

1. Criteria supported by the public

Please rate how important you think the following criteria are:

Critically important = 10

Of no importance = 0

	Household survey	Consultation questionnaire		
		Organisations	NHS Employees	Other Individuals
Quality and Safety	9.6	9.7	9.7	9.6
Travel and Access	8.6	8.5	8.3	8.6
Affordability and Value for Money	8.4	7.8	7.5	7.5
Transition	8.2	7.1	7.0	6.8

Management

Evaluation Criteria?

- Can not be an internal process only
- Must involve patients and the public
- Must also consider inequalities

Criteria
Quality & Safety
Travel & Access
Transition
Affordability & Value for Money
Other information:
Public consultation feedback
Integrated Impact Assessment



Evaluation Criteria -

Integrated Impact Assessment - Introduction



The **Integrated Impact Assessment** considers the potential positive and negative impacts on people with protected characteristics and other vulnerable groups:

Age: Children, Young
People, Older People
(Over 65)

Disabled People

Gender
reassignment

Pregnancy &
Maternity

BAME Groups

Religion and Belief

Sex: Men & Women

Sexual Orientation

Deprived
Communities